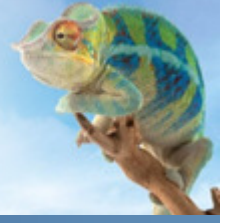


# VOIPconnect

## Pricing



### VOIPconnect VOICE BUSINESS LINE SERVICE

- Line: R 95 per trunk / month  
10 concurrent calls / trunk line
- Number: R 85 activation / number  
R 2.50 per number / month

### GATEWAY OPTIONS

#### Runway BRI/PRI to SIP gateway

Runway X5 4 BRI Gateway (8 channel)	R 9,995
Runway X5 8 BRI Gateway (16 channel)	R 12,795
Runway X10 1 PRI Gateway (30 channel)	R 23,195
Runway X10 2 PRI Gateway (60 channel)	R 27,207
Installation per site	R 3,000

### RENTAL OPTIONS

#### Runway Gateways Cost per month

Runway X5 4 ISDN BRI Gateway	R 495
Runway X10 1 ISDN PRI Gateway	R 795

### PRICING AND CONTRACT TERMS

Connection Telecom numbers	R 85 activation / number R 2.50 per number / month
Number porting cost*	R 85 activation / number R 2.50 per number / month

Contract is annual (12 month) with 30 days' notice from end of contract period.

\* Number porting costs are included in the number activation fee.

All prices exclude VAT.

### VOIPconnect VOICE ACCESS SERVICE

- Includes either ADSL broadband or Diginet fixed line service.
- Required capacity for contracted number of concurrent calls.
- ADSL or Cisco (for Diginet) router.
- ViBE application for number of concurrent call licensing.
- Link monitoring and active support.

Higher capacity services are available on Metro Ethernet.

#### VOIPconnect Diginet – monthly charges

VOIPconnect 8	8 channels	R 950
VOIPconnect 15	15 channels	R 1,330
VOIPconnect 20	20 channels	R 1,620
VOIPconnect 30	30 channels	R 2,250
VOIPconnect 45	45 channels	R 3,130
VOIPconnect 95	95 channels	R 5,920

#### Once-off Diginet installation

Diginet installation	R 3,800
----------------------	---------

Any Diginet upgrades cost R 995.

#### VOIPconnect ADSL – monthly charges\*

VOIPconnect 5	5 channels	R 730
VOIPconnect 10	10 channels	R 1,240
VOIPconnect 15	15 channels	R 1,520
VOIPconnect 20	20 channels	R 1,790
VOIPconnect 30	30 channels	R 2,460

\* Excludes Telkom exchange monthly line rental.

#### Note:

The number of calls possible on any given capacity contracted depends on several factors. These include the number of local PSTN lines and the codec used. (Codecs are used to convert voice into digitally encoded packets.) Channels indicated here are based on using the G.729a codec.

# TELVIVA and VOIPconnect

## Call Rates



### TELVIVA N+ CALL RATES

- Billing is per second.
- There is no minimum connect charge.
- Call forwarding applies if your line is down.

Destination	Rate (R)
MTN	0.75
MTN off-peak	0.70
Vodacom	0.75
Vodacom off-peak	0.70
Cell C	0.85
Cell C off-peak	0.80
Telkom 8ta	0.95
Telkom 8ta off-peak	0.90
Telcom local and national	0.275
Telcom local and national off-peak	0.235
United Kingdom	0.275
United States	0.275

### Alerts

This unique feature for proactive warnings can be set to alert you about long or expensive calls, telephone lines not registered, calls to destinations (alerts on potential call abuse) and when the maximum concurrent calls limit is exceeded.

### Save!

This service will reduce your telecommunications costs.

You can also connect your PBX to a growing ecosystem of customers and suppliers connecting on-net at a fraction of the cost of PSTN or mobile calls.

Your company can also phone internationally\* for less than the cost of a local call.

*\* EU, Asia, Pacific, BRICS, North America. Some exclusions apply. Contact us for the full list of international call rates.*

All prices exclude VAT.  
Prices correct as at 1 August 2012.

### More information

For further information, please contact  
Connection Telecom on 0878 200 200 or  
[sales@connection-telecom.com](mailto:sales@connection-telecom.com)